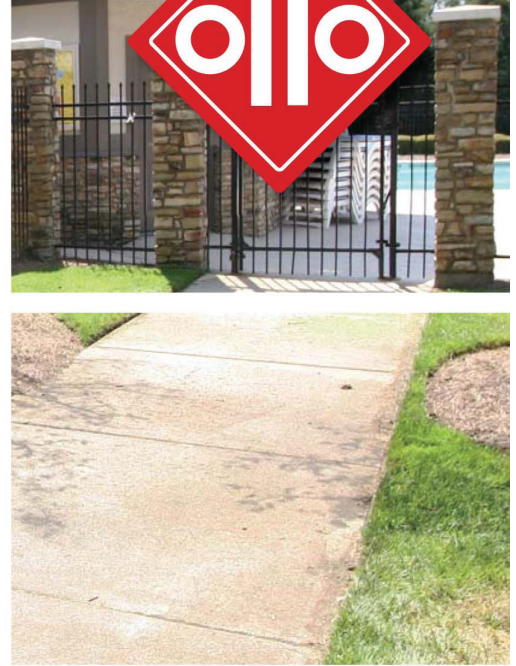
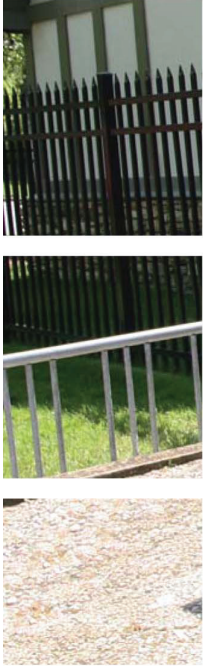


Pioneer™



Holtz Industries, Inc. | 200 S. Terrace Ct | Newark, OH 43055 - Call Us Toll Free: 1-800-535-0104

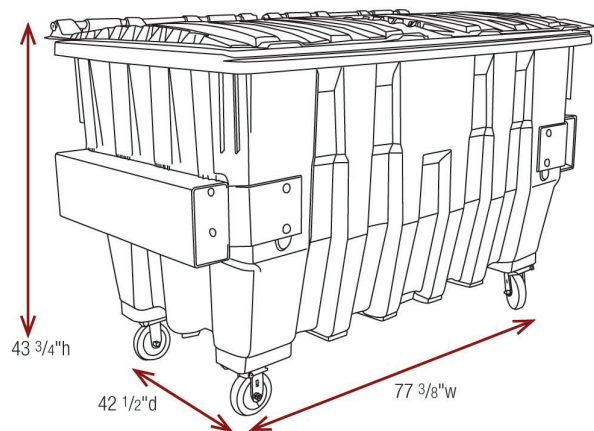
▼ Corrugated Plastic Container For A Variety Of Uses

- Weighs 1/3 less than same size metal containers
- Easy to maneuver over curbs and uneven surfaces
- Never needs painting; will not chip, crack, or peel
- Will not corrode in salt air or humid environments
- Ideal for wet refuse
- Integrally molded details reinforce lift and stress points to accommodate heavy loads
- Dual hinged lids keep pests out, and odor and refuse in



Product is in compliance with A.N.S.I. standards.

Measurements reflect maximum dimensions.



▼ Available Colors

The Pioneer™ is available in 5 standard colors.



Green - 56



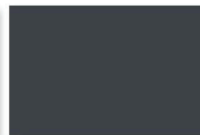
Forest Green - 65



Dark Blue - 68



Brown - 63



Dark Gray - 50

Pioneer™ lids are black and complement all container colors.

Colors as shown in this document may differ slightly from the actual product.

▼ Features



- Fully stackable with or without casters
- Two drain plugs for easy drainage
- Standard 6" casters, optional 8" casters available for easy maneuvering
- Otto's Pioneer™ containers have been successfully used in the field since 1994



- Rounded urethane tread on casters is quiet and easy to roll

- Reinforced caster mounting for increased strength and durability

- Quick release caster plate allows for fast caster replacement from the outside of the container by removal of one nut and bolt



Bolted-on dual lifting sleeves fit standard front load trucks. Designed for strength and durability, lifting sleeves are built from the highest quality, heavy duty components to withstand abuse from lifter arms

▼ Container Specifications

MODEL	HEIGHT	WIDTH	DEPTH	LOAD RATING
2 CU. YD.	43 3/4"	77 3/8"	42 1/2"	1400 LBS.

Container specifications vary slightly based on product mold.

▼ Shipping Information

MODEL	ASSEMBLY WEIGHT	STACKING	T/L QTY (53' TRUCK)	LTL STACKING	LTL MAX. QTY
2 CU. YD. ASSEMBLED	255 LBS.	3 HIGH	42	2 HIGH	N/A
2 CU. YD. UNASSEMBLED	255 LBS.	5 HIGH	70	5 HIGH	N/A

Shipping information is estimated.

Holtz Industries, Inc.
200 S. Terrace Ct
Newark, OH 43055
Toll Free: 1-800-535-0104

Solutions in Waste Packaging™

