



Holtz Industries, Inc. | 200 South Terrace Court | Newark, OH 43055

TF: 1-800-535-0104 | Web: www.holtzindustries.com

Single Pivot

SINGLE PIVOT HOOK HOISTS

54" OR 61 3/4" HOOK HEIGHT (BOLT ON)

MODELS: U20-HK & U30-HK

Single Pivot Hook Hoists feature a universal fit for nearly any chassis. The simple design of the single pivot hook hoist means fewer moving parts and less maintenance. Designed to operate in a variety of applications, single pivot hook hoists can be used in the waste, construction, recreation, landscaping, and auto industries. The U20-HK & U30-HK models offer benefits through their versatility and dual hook height capabilities.



Standard Features

- Inside air controls mounted in ergonomic power tower featuring Plug And Play™ wiring
- Backup alarm & hoist up alarm with signal light in cab
- Secondary manual controls mounted outside on driver's side
- Outside frame rail stationary rear container hold downs
- Rear flanged rollers with rear transition container supports
- Rear roller is ductile cast iron with bronze bushing
- T1 steel hook, bolt on hook height 54" or 61 ¾"
- Welded & bolted on roller stools with 4" OD rollers & bronze bushings
- Rear apron & bumper assembly complete with LED lighting & pintle/reese adaptable
- Steel tank with dual sight / temp gauge air breather
- Hoist maintenance / safety prop
- Warranty: 2-year limited on hydraulic system
- Customized engineering layouts ensure the best fit for each customer
- Engineered and manufactured in the U.S.



Inside air controls in power tower



Rear apron & bumper assembly complete w/ LED lighting & pintle/reese adaptable



Secondary outside manual control valve with protective cover



Solid steel front jib locks



Steel tank with dual sight/temp gauge and air breather



Welded & bolted on roller stools with 4" OD rollers & bronze bushings



Outside frame rail stationary rear container hold downs



Rear flanged rollers with rear transition container supports



T1 steel hook, adjustable bolt on from 54" to 61 ¾"



FEATURE	U20-HK / U30-HK
Hoist main frame	Adjustable - structural tubing A500 Grade C
Jib frame/pivot tube	Structural tubing A500 Grade C & A514 - T1 steel
Hydraulic pump	Gear type 37.5 GPM @ 1,500 RPM
Operating pressure	3,500 PSI
Hydraulic valve	2 spool / 45 GPM w/ safety bypass
Oil reservoir	20-gallon steel tank w/ internal 3 micron return filtration
Lift cylinders	(2) dual acting rod type
Jib cylinders	(1) dual acting rod type
Hinge shaft	2" solid steel
Front stops	Jib fully extended into steel jib locks
Hold downs	Stationary rear hold downs (outside rail)
Container stools	Rollers w/ bronze bearings
Pickup Hook	A514 - T1 steel
Adjustable hook height	Bolt on (54" or 61 ¾")



Available Options

- Pioneer tarping systems
- Additional container hold downs
- Auxiliary hydraulic hook-ups / wet kits
- Variety of fenders (steel, aluminum & poly)
- Toolbox styles and sizes (steel, aluminum)
- Pintle hook and reese style hitch assemblies
- Safety and LED work lights
- Scale systems
- Add air for non-air trucks
- Rear view / backup camera systems
- Additional LED safety & work light configurations
- Lift axles, tires and rims



Pioneer tarping systems



Toolbox styles and sizes (steel, aluminum)



Pintle hook & reese style hitch assemblies



Add air for non-air trucks



Variety of fenders (steel, aluminum and poly)



LED work lights



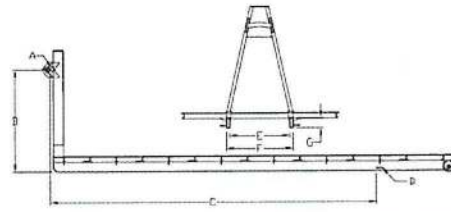
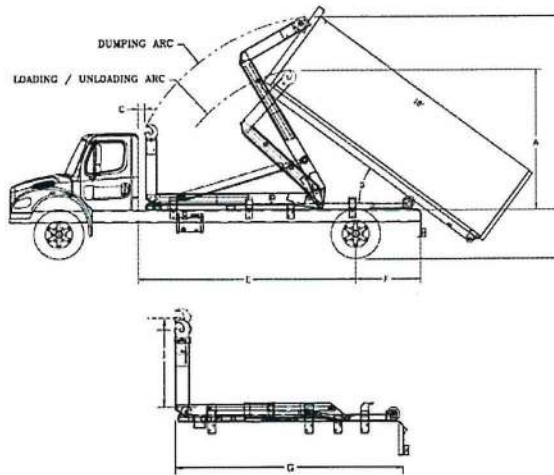
Rear view/backup camera systems

U30-HK-156 shown with poly fenders, aluminum diamond plate toolbox and bumper mounted work lights



Single Pivot

Figure 1



Lift Bar Dia.	Hook Ht.	Bar to Hold Down	Hold Down Locations	Inside Sill Width	Outside Sill Width	Long Sill Ht.
A	B	C	D	E	F	G
2 1/2"	54" & 61 3/4"	127 1/2" min.	Outside	36 1/2" min.	41 3/4" max.	6" min.

Notes for Figure 1

- When recommending container lengths, weight distribution, fender interference and overhang are factors. Please consult your local ordinances when determining the model of hoist needed to suit your container needs.
- Factory tested with recommended container length and water level load.
- Total maximum height will depend on the container and frame height. Consult engineering for clearance.
- Frame Height = Top of truck chassis frame to ground. Using 17 1/2" & 22 1/2" tires. Any truck frame higher than 42" will change hoist capacities, dump angle and its ability to snatch onto the bar; consult engineering if higher than 42". Optimized dump angle is achieved with containers that are the same length as the overall hoist.
- This distance does not allow for a behind the cab (BTC) oil reservoir, tarper platform and or room to add a tarper; must add space for those items.
- Air ride suspensions require up to 25" maximum after frame.

Minimum Truck Requirements (Single Axle)

Axle rating: U20 = 8,000 front / 18,000 rear; U30 = 12,000 front / 26,000 rear
Truck torque: U20 = 212 ft. lbs.; U30 = 418 ft. lbs.

*The chart below is an example of how to calculate the chassis section modulus (RBM / PSI = SM). Regardless of the frame YIELD and RBM, the min. SM must be 15.5 in³ (U20) & 17.5 in³ (U30) or more per each frame rail.

Truck Channel Ht.	RBM	Yield (PSI)	RBM/PSI = SM in ³
10" or more (single wall)	1,860,000-3,000,000 2,100,000-3,600,000	120,000 psi	15.5 in ³ - 25 in ³ 17.5 in ³ - 30 in ³
10" or more (double wall)	1,550,000-3,000,000 1,750,000-3,000,000	100,000 psi	15.5 in ³ - 30 in ³ 17.5 in ³ - 30 in ³

Note: The single walled 120k psi with RBM less than 1,860,000 would not be acceptable because its SM would fall below the 15.5 in³ minimum specification on the U20-HK (1,850,000 / 120,000 = 15.42 in³). For frames less than 10" consult engineering.

Specifications (Single Axle)	U20-HK-120	U20-HK-132	U20-HK-144	U30-HK-138	U30-HK-156	U30-HK-176
Recommended Container Size - ¹	10' to 14' or 12' to 16'	12' to 16'	12 to 16'	12' to 16' or 14' to 18'	14' to 18' or 16' to 20'	16' to 20'
Rated Hoist Capacity @ Hook Height ²	20,000 lbs	20,000 lbs	20,000 lbs	30,000 lbs	30,000 lbs	30,000 lbs
A - Max. Hook Height (Load/Unloading) ^{3,4}	106"	106"	106"	119 3/8"	119 3/8"	119 3/8"
B - Max. Hook Height (Dumping) ^{3,4}	131 1/8"	131 1/8"	131 1/8"	156 3/8"	156 3/8"	156 3/8"
C - Back of Cab to Hoist ⁵	2 1/4"	2 1/4"	2 1/4"	3 1/2"	3 1/2"	3 1/2"
D - Dump Angle (per recommended container range) ⁴	56° - 42°	50° - 35°	50° - 35°	68° - 41°	56° - 38°	49° - 35°
E - (CA) Cab to Axle ⁵	120"	132"	144"	138"	156"	176"
F - After Frame ⁶	38 1/2" or 62 1/2"	50 1/2"	38 1/2"	44 3/4" or 68 3/4"	50 3/4" or 74 3/4"	54 3/4"
G - Hoist Length	155 1/8" or 179 1/8"	179 1/8"	179 1/8"	179 1/8" or 203 1/8"	203 1/8" or 227 1/8"	227 1/8"
H - Frame Height ⁴	42" or less	42" or less	42" or less	42" or less	42" or less	42" or less
I - Hook Height	54" or 61 3/4"	54" or 61 3/4"	54" or 61 3/4"	54" or 61 3/4"	54" or 61 3/4"	54" or 61 3/4"
Lift Cylinders - (2) dual acting	5" x 3" x 52"	5" x 3" x 52"	5" x 3" x 52"	6" x 3 1/2" x 78"	6" x 3 1/2" x 78"	6" x 3 1/2" x 78"
Jib Cylinder - (1) dual acting	3" x 2" x 37"	3" x 2" x 37"	3" x 2" x 37"	4" x 2 1/2" x 48"	4" x 2 1/2" x 48"	4" x 2 1/2" x 48"
Approximate Weight w/ Standard Features	3,427 lbs.	3,427 lbs.	3,427 lbs.	4,321 lbs.	4,321 lbs.	4,321 lbs.
Cycle Times @ 1,500 RPM (PSI / GPM)	3,500 / 37.5	3,500 / 37.5	3,500 / 37.5	3,500 / 37.5	3,500 / 37.5	3,500 / 37.5
Extending Dump	30 sec.	30 sec.	30 sec.	31 sec.	31 sec.	31 sec.
Retracting Dump	19 sec.	19 sec.	19 sec.	20 sec.	20 sec.	20 sec.
Extending Jib	4 sec.	4 sec.	4 sec.	4 sec.	4 sec.	4 sec.
Retracting Jib	2 sec.	2 sec.	2 sec.	3 sec.	3 sec.	3 sec.

Distributed by:

Holtz Industries, Inc. | 200 South Terrace Court | Newark, OH 43055
TF: 1-800-535-0104 | Web: www.holtzindustries.com

