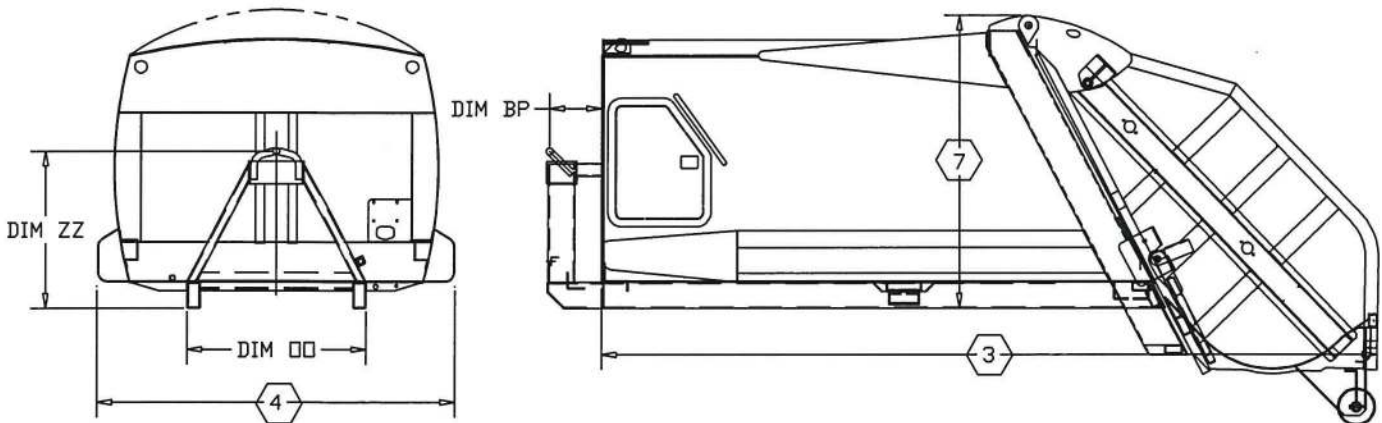
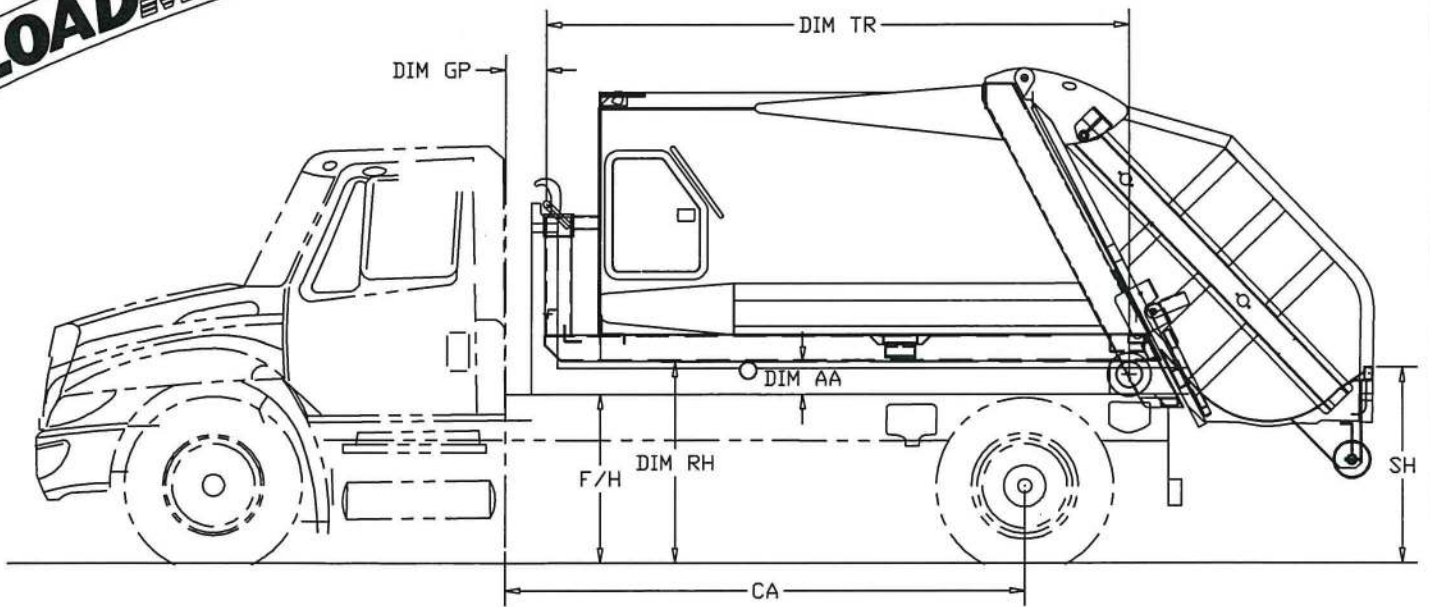


# LOADMASTER

## Hook-Lifted ELITE SERIES

lift-adapted "Small" Rearloader



### DIMENSIONAL SPECIFICATIONS

AVAILABLE BODY VOLUMES →	6 YARD <sup>3</sup>	8 YARD <sup>3</sup>	10 YARD <sup>3</sup>	11 YARD <sup>3</sup>
1 HOPPER INSIDE WIDTH	66	66	66	66
2 HOPPER OPENING HEIGHT	41	41	41	41
3 OVERALL LENGTH BODY'S "FACE" TO SILL	156 1/4	178 3/4	204 1/4	204 1/4
4 OVERALL WIDTH OF ELITE	85 1/2	85 1/2	85 1/2	85 1/2
5 APPROX BODY WEIGHT	7,400 LBS	7,900 LBS	8,400 LBS	8,700 LBS
6 HOPPER CAPACITY	1.0 YD <sup>3</sup>	1.0 YD <sup>3</sup>	1.0 YD <sup>3</sup>	1.0 YD <sup>3</sup>
7 HEIGHT...ROLLER'S TOP (GATE LOWER'D)	67 3/4	67 3/4	67 3/4	71 3/8
HEIGHT...HL'S ROLLER'S TOP (GATE RAISED)	116	116	116	116

HEIGHT/ALTITUDE DIMS WILL VARY SIGNIFICANTLY WITH VARIOUS CHASSIS/ HOOKLIFT COMBINATIONS...  
THE HOOK-LIFTED "PRE-REVIEW" WILL REVEAL THESE DIMENSIONS (SUCH AS "SH" DIM)

### CHASSIS RECOMMENDATIONS

BODY SIZE	MINIMUM GVWR	CA
HOOKLIFT'D 6 YD <sup>3</sup>	21,000	100"
HOOKLIFT'D 8 YD <sup>3</sup>	23,000	124"
HOOKLIFT'D 10 YD <sup>3</sup>	25,500	150"
HOOKLIFT'D 11 YD <sup>3</sup>	25,900	150"

These HOOK LIFT ELITE "charted" recommendations are "best" thought of as "PRELIMINARY/ BALL-PARK".  
For any HOOK LIFT application... consult with Dealer & Factory for REVIEW process.

This published information is "informational" only and shall not be construed to warrant suitability of the product for any particular purpose, as performance may vary with conditions encountered.

Consult with your dealer and/or LOADMASTER, at the time of order creation, for final "ordered" specifications.

Holtz Industries, Inc.  
200 South Terrace Ct | Newark, OH 43055  
TF: 1-800-535-0104 | Web: [www.holtzindustries.com](http://www.holtzindustries.com)

## "HOOK-LIFTED " ELITE (HL-E) ... "Base Product" Specifications

(Aug 16, 2010)

Description of **BASE PRODUCT Hook-Lifted ELITE 6 ,8,10 or 11** Yard  
(See Images here...these images reflect HL-E "Base Product Standard")

### Material Specifications-

See the "everyday" ELITE Product Data Sheet for material specs for Body, tailgate, blades,etc...the base-product Hook-Lifted ELITE (HL-E) is basically the same materials. Except that...

the Under-Floor Structures of the HL-E's are setup to suit a specific Hook-Lift. The HL-E's Main Longitudinals are "shallowed" to 6" deep tubular (in lieu of 8" deep) which "helps" reduce the Height increase. The HL-E main longs are spaced Laterally (DIM **OO**) to suit the *specific* model of the HL customer is selecting (varying...thus Pre-Review). The cross-members under-the-floor are "shallowed & thickened" ...to create needed clearances for hook-lift's mechanism. The *rearmost* under-floor Beam is specialized to allow the Hook-Lift's *Tail Roller* To "tuck into" this region...helping assure the C.G. is as far *Forward* as possible.

### Hydraulic Specifications-

See "everyday" ELITE data sheet...the HL-E will be same components.

The Oil Tank Is NOT supplied by Loadmaster...the Tank is "a part of" the Hook-Lift itself. This Oil Tank "should be" 15 or more gallons capacity. The Pump/PTO is not a part of the HL-E's Base Product...again this is "a part of" the Hook Lift itself. Ideally, the "Flow" would be approx 15 GPM @ thrtl-adv. Loadmaster simply Caps-Off the Pressure & the Return ports at the Body's Face region. The "Patch-In" kit is not supplied by Loadmaster (again either "already exists" on the HookLift itself or will need to be "field-added" to the Hook-Lift...which often is "already" customer owned)

### Electrical Specifications-

See again the "everyday" Elite product data sheet. But...the HL-E is similar to a "shipper" body. The *in-the-cab* electrical components will be "boxed-up and shipped-loose" ...then later Field-Installed. Assure the completed unit complies with all Wastec's ANSI standards!! Loadmaster will have installed, as usual, all the Street Lightings AND will have a Dust Capped (with Laynard) multi-pin Deutsch connector...mounted to the BentPin A-frame (see image to the right here).

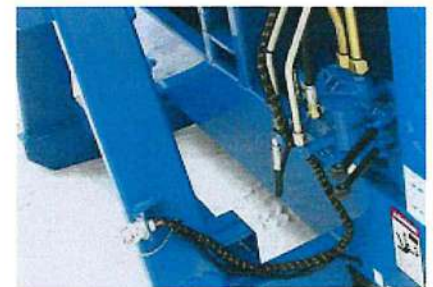
### Bent-Pin/ A-frame (& Landing Rollers)-

Included and integrally-welded as Base Product Standard. There are a few different Industry PIN HEIGHTS that the End Customer can choose...it is thus important that the Dealer supply the Correct Dimensional information (*per the specific order/ application*) > Loadmaster then will "match" Bent-Pin Height to Dealer-supplied Dimensions Per Order (DIM **ZZ** will VARY).

The Safety-Critical "Body Hold Downs" are NOT pre-welded to Underfloor...varying app *locations*.

### CHASSIS SPEC- Accounting for the Hook Lift *itself*...

See previous page...the Hook Lift *itself* ADDS deadweight (typically approx 3K)...this extra Deadweight has been added to the charted MIN recmn'ds on this data sheets previous page. Also Important >the recmn'd **CA's** are extended 12"-16" (versus the Everyday non-HL Elites) to help in increasing the likelihood that the ELITE C.G. can be as far FWD as possible (The Hook-itself *consumes* about 10" -12" of frame -rail...so to speak). Read the related Paragraph...just below here **V**



## IMPORTANT >>> early REVIEW required !! ... for each and every possible Hook Lifted ELITE "new" Application

Due to "dimensional variability" of the many & varied Hook Lift mechanisms (AND also varying CHASSIS dimensions)> each application/ order must be REVIEWED with LoadMaster before the final order/ final build-documents are created. There are at least 2 Key & Fundamental topics for pre-REVIEW (if these "2 fundamentals" do not come out well...the End Customer will most likely be DIS-satisfied with his Hook-Lift ELITE)

- Assure the CG (Center of Gravity) of the Hook-Lifted Elite is "far enough" FORWARD to have a "workable" weight distribution
- If there are Cart Tippers and/or container handling "options" desired...the LoadSill ALTITUDE must be pre-REVIEWED (DIM SH). Any Hook-Lift, by it's nature, will RAISE the Body and it's LoadSill (by 7" to 10" , typically). Cart and/or "can" coupling/uncoupling may (or may not) become a Issue due to this Hook-Lift increased LoadSill Height (DIM SH) (thus...the need to be REVIEWED early-on)

The pre-REVIEW process is simply that > early on...with any customer's interest/ initial Inquiry for a Hook-Lifted ELITE application...

- the Dealer supplies to Loadmaster, on the pre-printed Loadmaster FORM, the (mostly) DIMENSIONAL information about the CHASSIS and the Hook Lift itself (per SPECIFIC Hook-Lift brand and model for EACH "varying" application), and then >>
- Loadmaster Engineering will then take the Dealer-supplied Info >create a "true-scaled" CAD side-view, searching this CAD "layout" then for any "topics" and/or "issues". Loadmaster then shares/sends a PDF copy of CAD layout with the Dealer for the Decision Point (workable app or "not").



#### Clean Curved Ejection Blade

The curved ejection blade rides on "UHMW" polyethylene wear shoes. Blade guides are closed channels welded to the inside body sidewalls, up above the dirt and grit which can accumulate on the floor, for extended shoe life and low maintenance.



#### Simple Hydraulic Controls

Controls are located in a comfortable location, mounted in machined "UHMW" polyethylene, for a more smooth wear resistant vibration dampened operation.



#### Body Side Door

The *Elite* side door provides a large convenient maintenance access. The attractive contoured door has large grab handles to help enter and exit the compactor body. Side door access ladder provided.



#### Rugged Compaction Blades *Elite*

The strong, clean, rugged design of the blades are also the easiest in the industry to remove and maintain. Loadmaster engineers designed the blades to run on large aluminum bronze or "UHMW" guide shoes for minimal wear and long life.



#### *Elite* Productive Hopper Size

The hopper features a solid one-piece smooth design, of exceptional toughness. The hopper material is 150,000# minimum yield, high strength, "T-1" steel.



#### Tailgate Locks

Loadmaster offers automatic hydraulic tailgate locks. Our tailgate cylinders have large oversize push rods, with built in restrictors to slow the drop speed of the truck tailgate. The tailgate seal is a tough 70 durometer.



#### Exceptional Wiring

Loadmaster believes it has the finest wiring in the industry. All main connectors are "aircraft" type. Each wire has its function printed along the entire length of the wire, enclosed in a breathable, protective, heavy nylon loom covering. Your mechanic should not have to go back and forth with a voltage meter. Certain optional accessories are provided for in each loom.



#### Smooth Body Side Walls

The *Elite* utilizes clean curved pre-stressed body side walls. Your logo will display beautifully, your maintenance staff will love to clean it, your customers will admire it. Elimination of the old style vertical rib reduces rust's ability to destroy the vehicle's strength and appearance.



#### Technologically Advanced Cylinders

Loadmaster utilizes the most advanced design available in its hydraulic cylinders. We take great pride in the technology and components from which our cylinders are constructed. Call and ask us for a complete description.

Distributed by:

Holtz Industries, Inc.

200 S Terrace Ct | Newark, OH 43055

TF: 1-800-535-0104 | Web: [www.holtzindustries.com](http://www.holtzindustries.com)

Loadmaster reserves the right to change specifications without notice and without obligation to install them on units sold. Information published is informational only and shall not be construed to warrant suitability of the unit for any particular purpose, as performance may vary with the conditions encountered. Illustrations shown may include optional equipment and accessories, and may not include all standard equipment.

LM Form 0502

# Elite

## LOADMASTER™

"THE TRADITIONAL CHOICE FOR RELIABILITY & PERFORMANCE"

**LOADMASTER™**

*Elite*

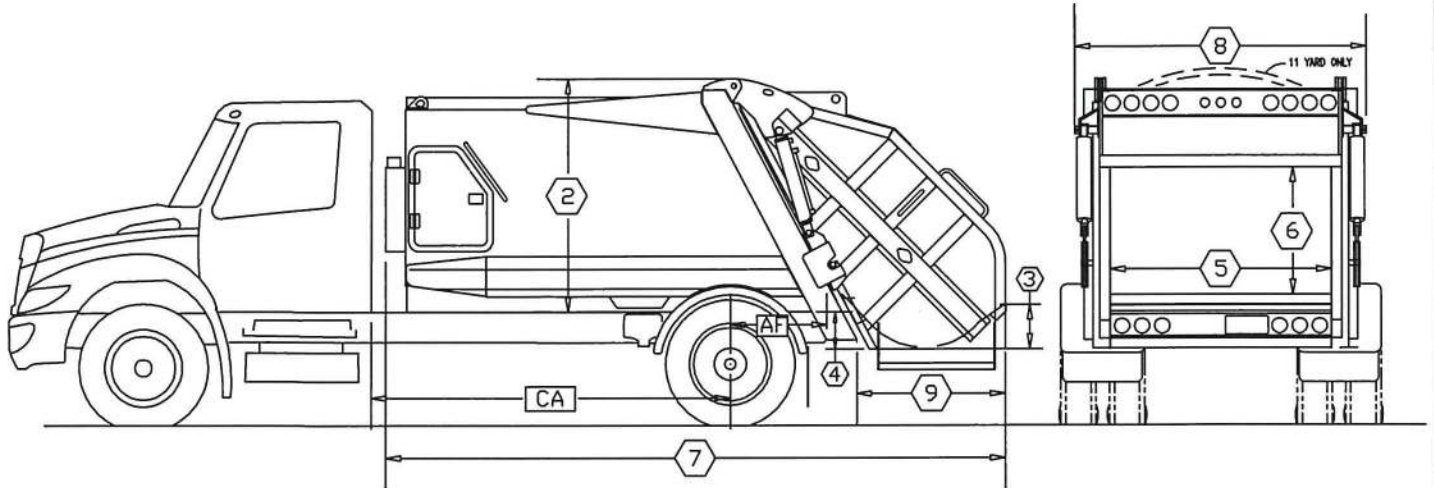


THE *Elite* ...SMALL IN SIZE, ELITE IN ITS CLASS!

# LOADMASTER

## ELITE SERIES

"small" rear loader



### DIMENSIONAL SPECIFICATIONS

1	AVAILABLE BODY VOLUMES →	6 YARD <sup>3</sup>	8 YARD <sup>3</sup>	10 YARD <sup>3</sup>	11 YARD <sup>3</sup>
2	HEIGHT ABOVE CHASSIS FRAME	69 3/4	69 3/4	69 3/4	73 1/4
3	DEPTH OF HOPPER	13	13	13	13
4	HOPPER BELOW CHASSIS FRAME	11	11	11	11
5	HOPPER INSIDE WIDTH	66	66	66	66
6	HOPPER OPENING HEIGHT	41	41	41	41
7	OVERALL LENGTH	161 3/4	185 3/4	209 3/4	209 3/4
8	OVERALL WIDTH	85 1/2	85 1/2	85 1/2	85 1/2
9	REAR OF BODY TO REAR OF TAILGATE	44 3/4	44 3/4	44 3/4	44 3/4
10	APPROX BODY WEIGHT	7,200 LBS	7,700 LBS	8,200 LBS	8,500 LBS
11	LOAD SILL ABOVE CHASSIS FRAME	2 INCHES	2 INCHES	2 INCHES	2 INCHES
12	HOPPER CAPACITY	1.0 YD <sup>3</sup>	1.0 YD <sup>3</sup>	1.0 YD <sup>3</sup>	1.0 YD <sup>3</sup>
13	HEIGHT ABOVE FRAME (WITH GATE RAISED)	118	118	118	118

### CHASSIS RECOMMENDATIONS

Specify ELITE chassis to have 19.5 wheel size (not 22.5).  
Consult factory IF intending 22.5 wheel size.

BODY SIZE	MINIMUM GVWR	CA	MINIMUM AF
6 YD <sup>3</sup>	17,000	85"	34"
8 YD <sup>3</sup>	21,000	108"	34"
10 YD <sup>3</sup>	25,500	134"	34"
11 YD <sup>3</sup>	25,500	134"	34"

Holtz Industries, Inc.

200 South Terrace Ct | Newark, OH 43055

TF: 1-800-535-0104 | Web: www.holtzindustries.com

## ELITE BASE-PRODUCT SPECIFICATIONS

### Material Specifications-Body

Body sides	10 ga. high tensile
Body rearward floor	3/16" high tensile
Body forward floor	1/8" high tensile
Body roof	10 ga. high tensile
Floor's longitudinals	tubular 3" x 8" x 3/16" wall
Ejector's track channel	1/4" high tensile
Body structural upgrade options available (thickness and alloy)	

### Material Specifications-Tailgate

Lower tailgate Sides	3/16" T-1 alloy
Upper tailgate Sides	10 ga. high tensile
Hopper floor	3/16" T-1 alloy
Separator panel	3/16" abrasion-resistant grade 235
Tailgate structural upgrade options available (thickness and alloy)	

### Material Specifications-Blades

Ejector's face panel	10 ga. high tensile
Ejector's structure	tubular 2" x 3" x 3/16"
Ejector's tracking shoes	UHMW polyethylene
Sweep blade face	3/16" T-1 alloy
Sweep blade pusharms	1/2" high tensile
Slide blade face	7ga. high tensile
Blades wrist pin & axles	2 1/4" dia. med carb cold finish
Slider's shoeing	nylatron nsm & uhmw polyethylene

### Hydraulic Specifications

Reservoir	20 gallon	Sweep Cylinders (2)	3 1/2" bore
Pump	cast iron gear-type (3 cubic inch per rev)	Pack (slider) Cylinders (2)	3 1/2" bore
Pump flow	18 gpm	Gate lift Cylinders (2)	3 1/2" bore
Max syst pressure	2,700 psi	Ejector Telescopic	2-stage (4.5/3.5)
Suction Filter	100 mesh	Body-mounted valve	2 function sectional
Return Filter	5 micron tank top	Tailgate-mounted valve	3 function sectional

### Electrical Specifications

Wire	14 ga sxl	Switches	centralized, in-cab panel
Wire identifiers	color & function labelling	Lights	grommet-mounted
Harnessing	multi-section; braid covering		
Harness Connects	Deutsch aircraft type		
Wire connects	heat shrink sealed		

### Some standard features

Epoxy primer paint  
 Undercoated  
 Automatic tailgate latches  
 Body access door with ladder  
 Full complement of lights  
 Quick change shoeing

### Some available options

Hot-shift PTO or cable shift  
 Work lights  
 Strobe lights  
 Drum winch (container handling)  
 Kart dumper

"Customer-preferred" choices

