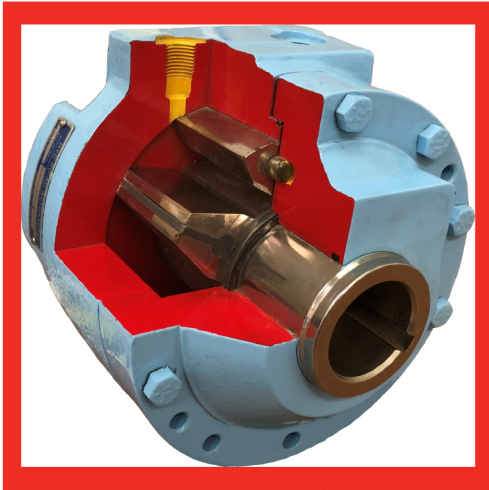




# LONG ARM ADJUSTABLE



MICROMATIC ROTAC<sup>®</sup> ROTARY  
VANE ACTUATOR

## NEW UPDATED DESIGN

- **LIFTS OVER 800 LBS 80" HIGH**  
*Industry Leading 40,500 in/lbs torque at 3000 psi*
- **MOUNTING VERSATILITY**  
*Allows for a range of mounting heights from 46 - 62" to accommodate a variety of truck chassis heights*
- **ROTARY VANE ACTUATOR**  
*Provides maximum lifting capacity and optimized cycle time to ensure reliable and efficient operation*
- **CART COMPATABILITY**  
*Designed for carts with US 2-Bar; ANSI Z245.60-2008, Type B Domestic Carts*
- **MADE IN THE USA**  
*Manufactured, assembled and tested in BERNE, INDIANA  
2-Year Manufacturer Warranty*



**THE ROTAC<sup>®</sup> LONG ARM ADJUSTABLE TIPPER IS THE ONLY CART TIPPER ON THE MARKET TO FEATURE THE MICROMATIC ROTAC<sup>®</sup> ACTUATOR - ITS SIMPLE YET EFFICIENT DESIGN FEATURES ONLY ONE MOVING PART!**