



Holtz Industries, Inc | 200 S Terrace Ct | Newark, OH 43055
TF:1-800-535-0104 | Web: www.holtzindustries.com

X-Series

X-SERIES ROLL OFF CABLE HOISTS

CAPACITY: 60,000 lbs.

MODELS: X6/X6T

RAIL TYPES: OR, EX, IO, HH

18' to 24' recommended container lengths

X6 cable hoists are built to last with heavy-duty components. The X6 cable hoist combines the speed of an Above Frame with the reliability and durability of a traditional U Series cable hoist. The X6 hoist has 1 winch cylinder, as compared to 2 in a traditional U series cable hoist.



Standard Features

- Inside air controls mounted in ergonomic power tower featuring Plug And Play™ wiring
- Back-up alarm & hoist up alarm with signal light in cab
- Secondary manual controls mounted outside on driver's side
- Outside frame rail stationary rear container hold downs
- Steel hydraulic tank side mounted with 3 micron filtration, dual sight/temp. gauge & air breather
- 10" Grease grooved cable sheaves
- Heavy-duty cast ductile iron rear hinge
- Automatic spring loaded pass through front container lock
- 4" O.D. Side rollers with bronze bearings
- Auto fold air assist ICC bumper
- Pintle adaptable rear apron & bumper assembly with DOT approved LED lighting
- Mid body LED turn signal lights
- Dual hoist maintenance / safety props
- Warranty: Limited lifetime on frame & 2-year limited on hydraulic system
- Customized engineering layouts ensure the best fit for each customer

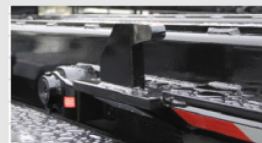
FEATURE	TANDEM AXLE
Hoist main frame	10" x 4" x 3/8" A500 Grade C Tubing
Hoist subframe	N/A
Cross members	Formed Angle 1/2" X 6 1/2" legs
Hydraulic pump	Piston Type 42 GPM @ 1,500 RPM (nominal)
Operating pressure	3,200 PSI
Hydraulic valve	2 Spool / 45 GPM With Saftey Bypass
Oil reservoir	50-gallon steel tank with 3 micron return filtration system
Lift cylinders	(2) Dual acting rod type 3-stage tel. - X6T models
Hinge shaft	2 1/2" solid steel
Winch cylinders	(1) Dual acting rod type
Cable / cable end	7/8" Steel cable / Swivel cable end
Cable sheaves	10" OD with Bronze Bearings with greased grooves
Cable anchors	Wedge-Type Ferrule
Front stops	5/8" Plate Steel
Front safety lock	Automatic Spring Loaded
Rear hold downs	HD nylon ratchet binders w/ hook
Outside rollers	4" OD With Bronze Bearings
Inside rail	1/2" Angle steel (IO models only)
Inside rail rollers	6" O.D. with bronze bearings (IO models only)
Tails	Fixed tail (OR, IO models); 80" ext. tail (EX models); 48" ext. tail (OX models)
ICC bumper	Auto fold air assist (optional ICC bumper available for EX models)



Steel hydraulic tank side mounted with 3 micron filtration, dual sight/temp. gauge & air breather



4" O.D. Side rollers w/ bronze bushings



Outside frame rail stationary rear container hold downs



Inside air controls in power tower or integrated into center console on cab over trucks; Secondary outside manual controls at main control valve



Air assist auto folding ICC bumper



Heavy-duty cast ductile iron rear hinge



Heavy-duty rear apron w/ split bumpers & recessed LED lighting



Signal light in cab

Available Options

- Pioneer® tarping systems
- Tarp and control valve mounting platform
- Steel, aluminum or poly fenders
- Toolbox styles and sizes (poly, steel, aluminum)
- Rear window screen protection
- Lift axles (steer and non-steer)
- Reverse mount lift cylinders
- Auxiliary hydraulic hook ups and wet kits
- Pintle hooks and towing applications
- Auxiliary containers stops and hold downs
- T1 steel wear strips for main frame rails
- Side mounted skid plates
- Various cable ends
- Safety and additional LED work lighting
- Speed limiting parameters for hoist up and ground speed
- Scale systems
- Back-up camera systems



Pioneer® tarping systems



Pintle hooks and wet kits for towing applications



Backup camera systems



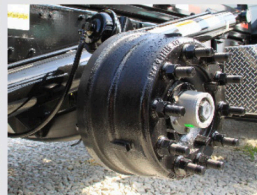
LED work lights



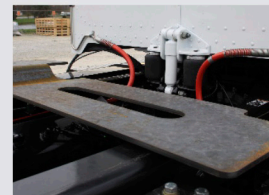
Toolboxes in various types and sizes



Fenders in various types and configurations



Lift axles (steer and non-steer)



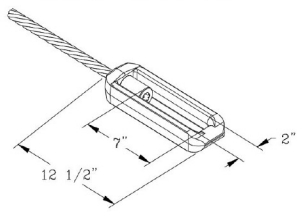
Tarp/valve mounting platforms



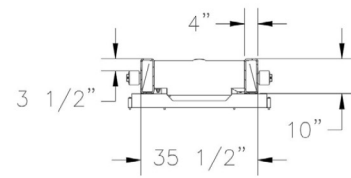
Rear window screen protection

X6-OR-174 shown with a Pioneer® RP4500 SARG tarp system, Forward mount lift cylinders, Rear window protection screen, Lift axle and poly fender options

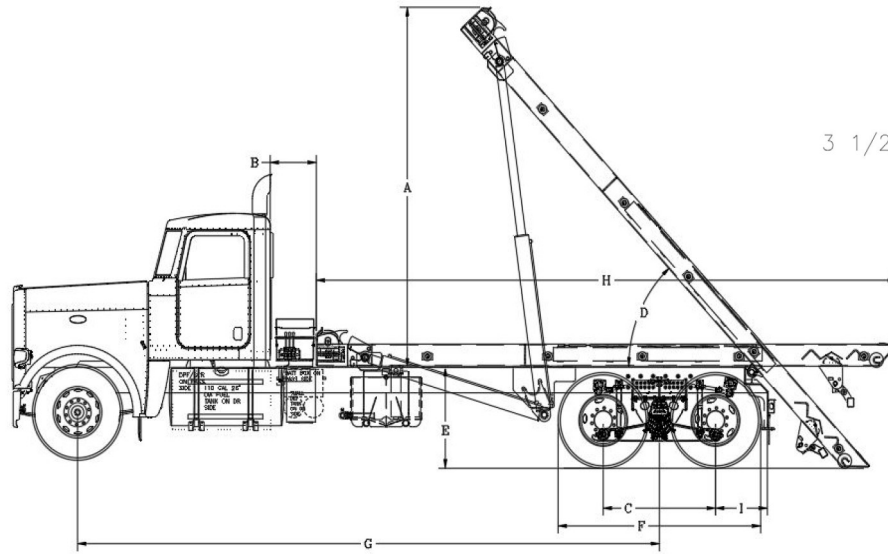




HOIST FRAME DETAIL



Holtz Industries, Inc
200 S Terrace Ct
Newark, OH 43055
TF:1-800-535-0104
Web: www.holtzindustries.com



Notes for chart below:

- 1) When recommending container lengths, weight distribution, fender interference and overhang are factors. Please consult your local ordinances when determining the model of hoist needed to suit your container needs.
- 2) Factory tested with recommended container length and water level load.
- 3) Frame Height = top of truck chassis frame to ground. Using 22.5" tires only. For larger tires, consult engineering for clearance.
- 4) This distance allows for a behind the cab (BTC) oil reservoir, tarper platform and or room to add a tarper. This distance is already included in with the CT (G) measurement. Subtract 12" from CT if no tarper platform is needed. Add 4" to the CT if adding a Roll Rite Tarp system.
- 5) Request additional tail length for spring suspensions higher than 45"; see chart 1 for reference.

Models

FEATURE	X6-OR-174	X6-OR-194	X6T-OR-174	X6T-OR-194
Recommended Container Size ¹	18' - 22'	20' - 24'	18' - 22'	20' - 24'
Rated Hoist Capacity ²	60,000 lbs.	60,000 lbs.	60,000 lbs.	60,000 lbs.
A – Height Above Truck Frame ^{3,5}	163 1/2"	178 3/16"	163 1/2"	178 3/16"
B – Back of Cab (BOC) to Hoist ⁴	6"	6"	6"	6"
C – Axle Spread	50" - 55"	50" - 55"	50" - 55"	50" - 55"
D – Raised Dump Angle ^{3,5}	47°	47°	47°	47°
E – Top of Truck Frame to Ground ^{3,5}	44"	44"	44"	44"
F – Tire OD to OD	96" Max	96" Max	96" Max	96" Max
G – Cab to Trunnion (CT) ⁴ <i>Add 12" for tarper & hard plumbing</i>	174"	194"	174"	194"
H – Hoist Length	279 1/4"	299 1/4"	279 1/4"	299 1/4"
H1 – Hoist Length w/ Tail Extended	N/A	N/A	N/A	N/A
I – After Frame (add 2" for air ride)	23"	23"	23"	23"
Lift Cylinders	6" x 4" x 72" DA	6" x 4" x 72" DA	6-5-4" x 118" DAT	6-5-4" x 118" DAT
Winch Cylinders	7" x 4" x 80 DA	7" x 4" x 90 DA	7" x 4" x 80 DA	7" x 4" x 90 DA
Tail Cylinder (extendable tail)	N/A	N/A	N/A	N/A
Approximate weight with standard features (ship out weight used; unmounted)	5,328 LBS.	TBD	TBD	TBD

* Containers that overhang the rear of the bumper (Fixed or Folding ICC) by more than 24" will require the appropriate flagging to meet DOT requirements *

Minimum Truck Requirements (Tandem Axle)

Axle Rating: 18,000 Front / 44,000 Rear
Transmission torque: 281 ft. lbs..

**The chart below is an example of how to calculate the chassis section modulus (RBM/PSI = SM). Regardless of the frame YIELD and RBM, the min. SM must be 20 in³ or more per each frame rail.*

Truck Channel Ht.	RBM	Yield (PSI)	RBM/PSI = SM in ³
10" or More (single wall)	2,400,000 – 4,500,000	120,000 psi	20 in ³ - 37.5 in ³
10" or More (double wall)	2,000,000 – 4,000,000	100,000 psi	20 in ³ - 40 in ³

Note: The single walled 120k psi with RBM less than 2,400,000 would not be acceptable because its SM would fall below the 20 in³ minimum specification (2,300,000/120,000 = 19.17 in³). For frames less than 10" consult engineering.

TRUCK FRAME HEIGHT & TAIL LENGTH CHART

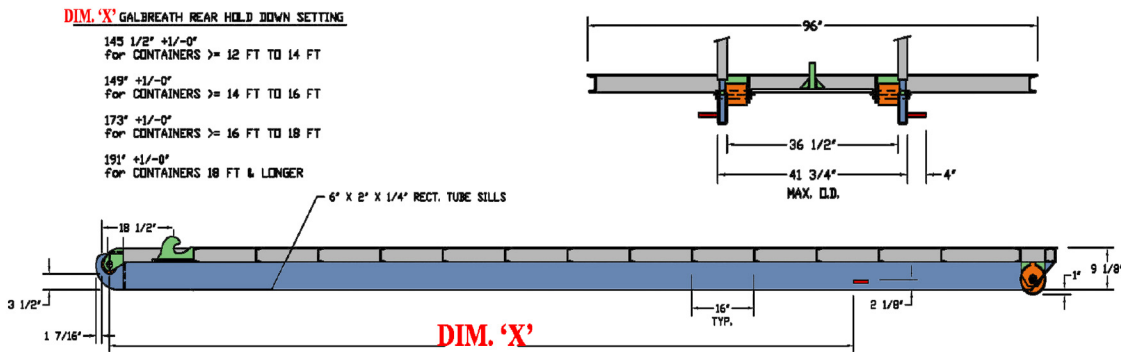
Frame Height (Inches)		Measured from center of rear hinge to tail	
MIN.	MAX.	Added Length	Total Length
42"	44.5"	0 inches - Std.	69.75"
45"	47.5"	4"	73.75"
48"	50.5"	8"	77.75"
51"	53.5"	12"	81.75"
54"	56.5"	16"	85.75"

Round to the nearest inch

Cycle Times @ 3,200 PSI & 1,500 RPM	42 GPM
Hoist Up -	27 sec.
Hoist Down -	16 sec.
Winch On -	21 sec.
Winch Off -	15 sec.

*X6-OR-174 theoretical times shown

OUTSIDE RAIL CONTAINER REQUIREMENTS



Distributed by:

Holtz Industries, Inc | 200 S Terrace Ct | Newark, OH 43055
TF: 1-800-535-0104 | Web: www.holtzindustries.com